

ASSEMBLY INSTRUCTIONS

BATHROOMS AND KITCHENS

HAVE A LOOK AT THE INSTALLATION VIDEO BY VISITING OUR WEBSITE faus.international AND ON [youtube](https://www.youtube.com)

1



Before starting the installation of FAUS laminate flooring, ensure that the surface where you are going to install it is completely smooth. You can install it on cement, vinyl, linoleum, wood, ceramic, marble, or stone. If you have carpet installed, it must be removed. It is also important to remove all joints and skirting boards. Let the planks acclimatize for at least 48 hours.

2

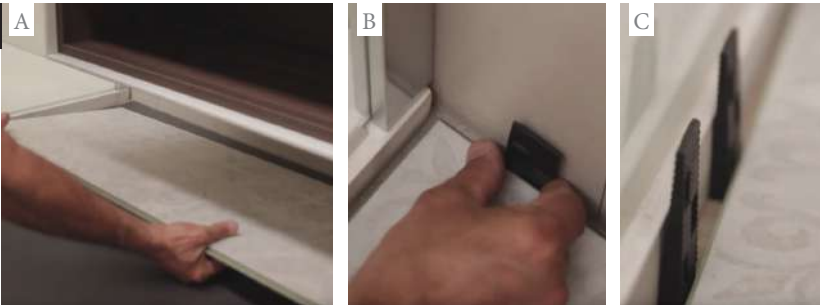


To install FAUS flooring on any surface, you should always use a comfort base that includes a plastic film with a moisture barrier ("underlay"). In addition to its levelling function, it will also reduce the acoustic vibrations caused by footsteps and impacts.

This foam should be placed throughout the space where the product will be installed, making sure that the ends do not overlap. The excess film from the underlay should rest on the underlay base and be sealed with adhesive tape.

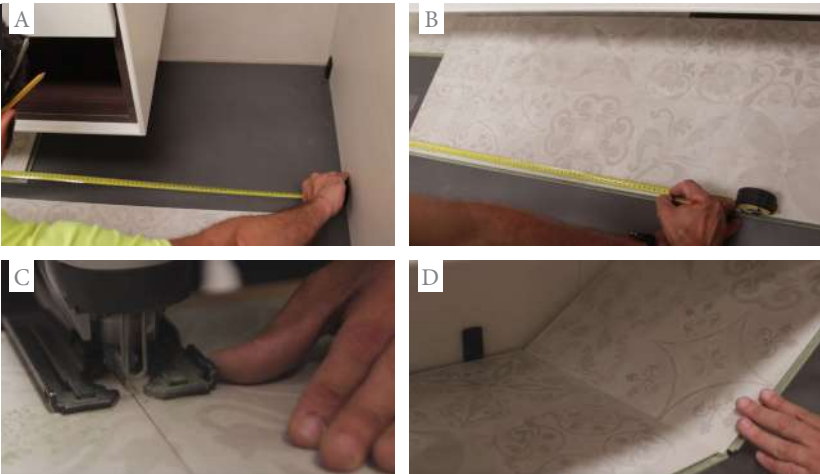
This point is very important, and if the chosen foam does not include a vapor barrier film, it must be purchased separately and incorporated.

3



Start assembling the floor from the left corner. Place the first plank with the tongue (the edge with fewer mechanical components) towards the wall and insert expansion wedges between the wall and the plank. We recommend trimming the protrusion of the tongue to avoid issues with the expansion joints. Both the expansion joint, and other fixed elements, should be 10 – 12 mm wide.

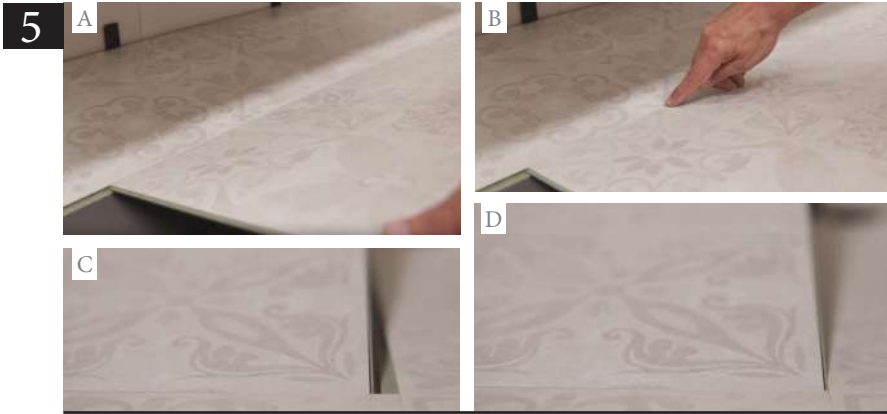
4



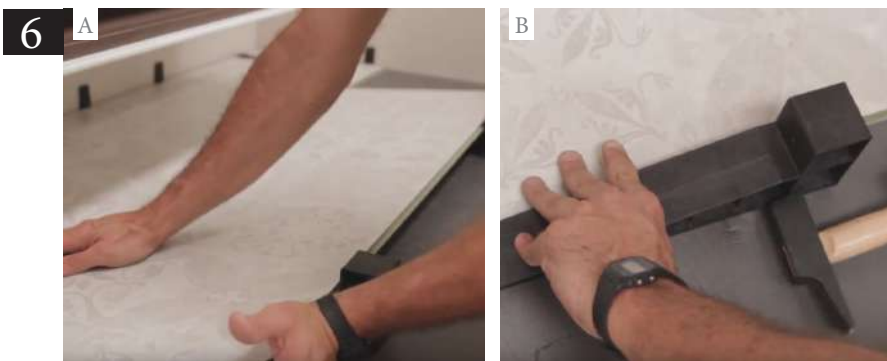
Insert the next plank at an angle. Follow the same procedure for the entire row. Mark and cut the last piece (a wood saw must be used).

ASSEMBLY INSTRUCTIONS

BATHROOMS AND KITCHENS



Start installing the second row according to the design pattern chosen. For example, for the design shown on the images, it should be cut to match the bevels indicated on each tile (approximately 50% of the plank from the previous row). In the case of a wood or stone design which allows it due to their structure, you can use the last piece from the previous row if it is longer than 40 cm.

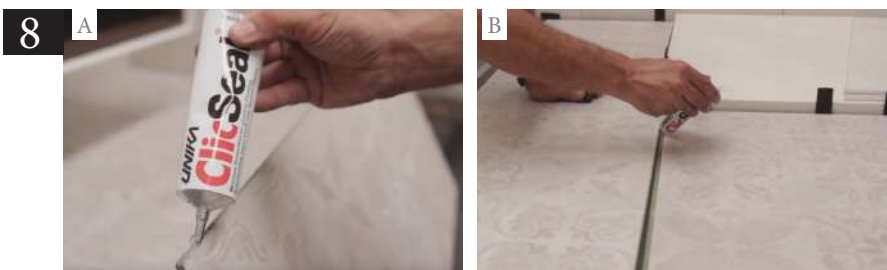


The installation can be done without the help of any tools, although if desired, special mounting wedges can be used (we recommend the **FAUS ACCUTITE INSTALTION KIT**).

In both cases, the assembly process is very similar. The wedges will allow you to easily achieve the correct angle (approximately 7°) so that the different planks fit perfectly. If you prefer not to use wedges, simply lift the last installed plank slightly to allow the one you are currently installing to fit into it, using our **LOC** system.



In areas where we cannot place the full plank, we measure and mark the space where the plank needs to be cut fit with a pencil, always ensuring to leave the appropriate expansion joint.



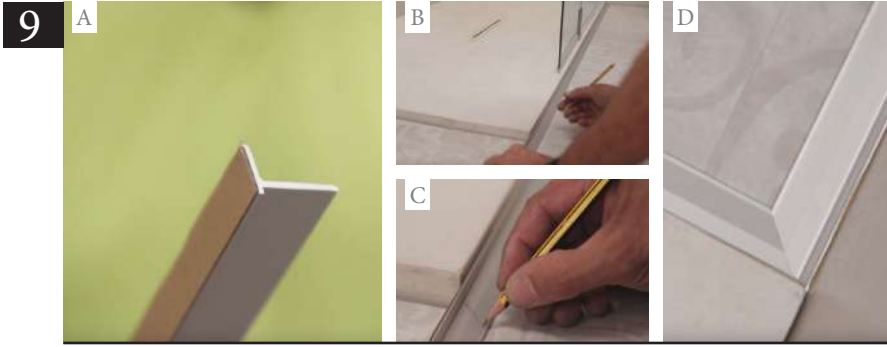
It is not necessary for general installations, but in areas with large and continuous water spills, it is recommended to apply our Clic Seal sealer. This should be applied to the tongue side of the click system. Remove the excess part.

UNA VEZ INSTALADO TODO EL SUELO...



ASSEMBLY INSTRUCTIONS

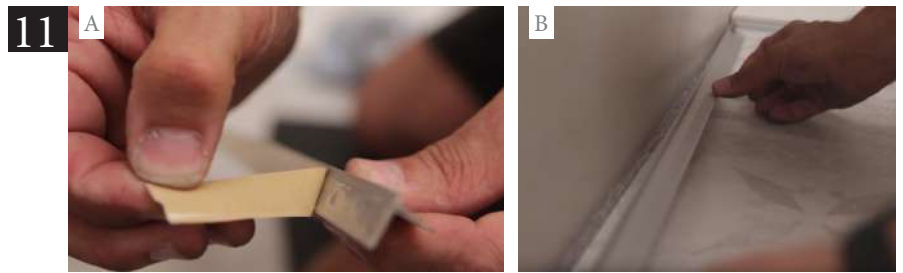
BATHROOMS AND KITCHENS



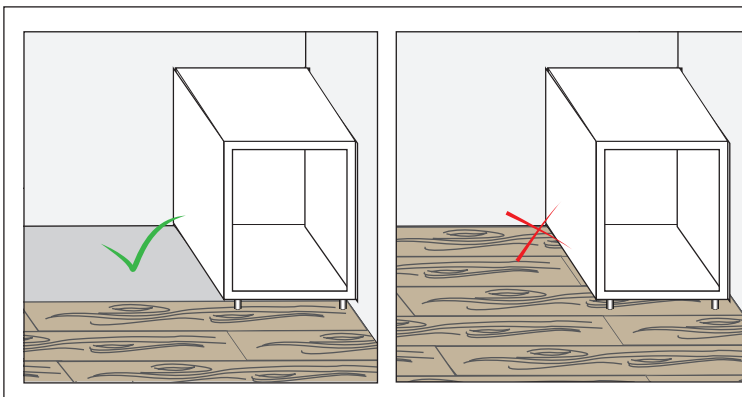
Once the entire floor has been installed... Prepare the aluminium profile that you will be installing as a skirting board. The side with adhesive tape is placed against the wall (do not remove protective film until step 11), and the bottom tab of the profile should align with the expansion joint. First, we place the aluminium profile and mark the cut. It is important that the cut is made at a miter angle.



Once the profiles have been measured and cut, it is time to apply flexible silicone around the perimeter between the floor and the wall, as well as between the planks which forms the expansion joint. After completing this step, the aluminium profiles can be installed.



We remove the adhesive tape's protective film and slowly place it while applying pressure.



HEAVY OBJECTS

Kitchen islands or other heavy object should not be placed directly on laminate flooring. Laminate floors should be able to move around heavy object to prevent the joints from opening and the boards from separating.

In the case of heat sources such as stoves, fireplaces, which can increase the temperature of the planks to over more than 30 C, use protectors in the vicinity of such equipment to keep the temperature below that value.

FINAL RESULT

