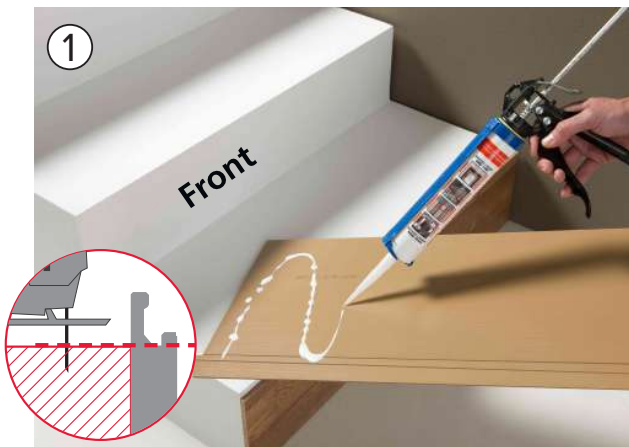


STAIR NOSE WATER-REPELLENT HDF

The FAUS stair nose is the perfect complement to provide that finishing touch to your stairs. It allows to achieve an aligned and continuous effect with a professional look and finish. In addition, this complement has the exact same color, design and strength as our laminate flooring.



INSTALLATION INSTRUCTION OF CLOSED LADDER



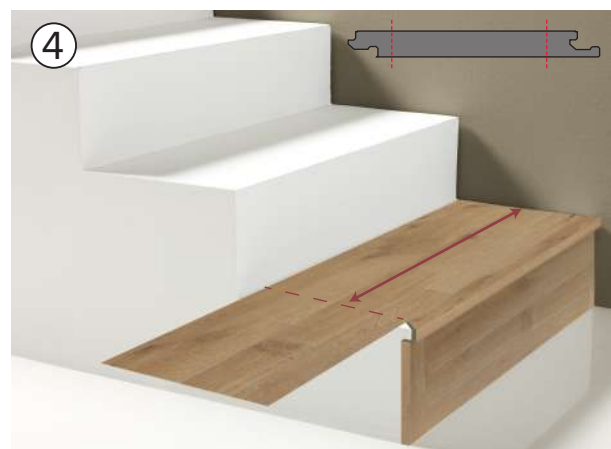
With a dry and levelled surface, cut the FAUS floor at the level of the risers (front) height, subtracting 80mm (size of the stair nose) and cut the tongue and groove of the 4 sides.



Once the front is glued, cut the stair nose profile to the size of the step, without sticking it.

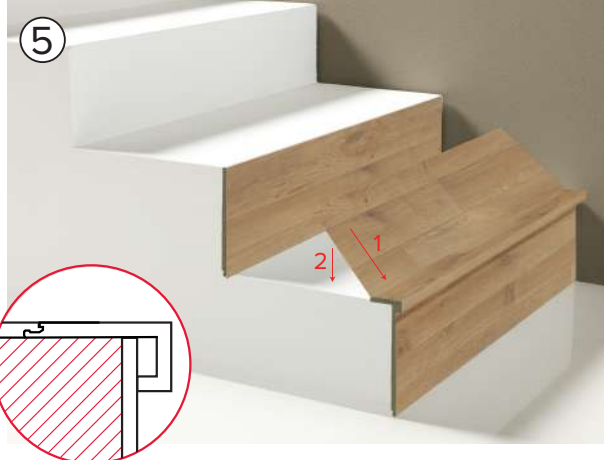


Measure the length of the step. Cut the piece of floor, leaving the decoration down. Transfer the measurement taken previously adding 2mm, counting from the male side. Then cut the piece of floor.



Measure the length of the step and and cut the plank at both sides to the measure, make sure to clean both the tongue and the groove transversal.

INSTALLATION INSTRUCTION OF CLOSED LADDER



Place the floor plank anchoring it with the Loc system.



Glue both parts together (plank and stair nose) and fix it to the step with silicone.



Repeat all operations on the following steps.

