

RECOMMENDATIONS FOR WALL PANEL INSTALLATION

FAUS
DECOR



- Avoid exposing the product to damp areas or locations too close to heat sources, such as fireplaces, halogens, etc.

- Acclimatize the panels before laying them for 48 hours.

- Do not install on freshly painted walls.

- Install on well-leveled, flat surfaces.

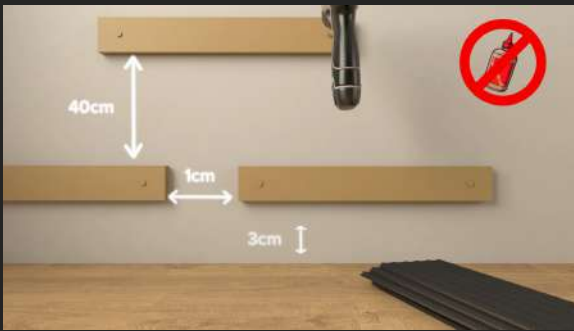
- Panels can be installed both horizontally and vertically.

- Clean with a damp cloth. Do not use abrasive products.

INSTALLATION INSTRUCTIONS

WALL PANELS USING BATTENS

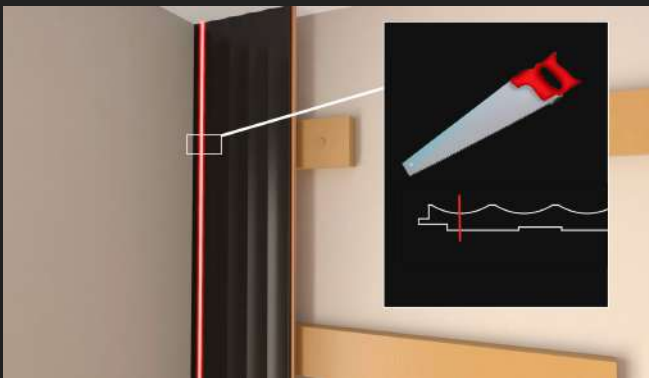
FAUS
DECOR



VERTICAL INSTALLATION

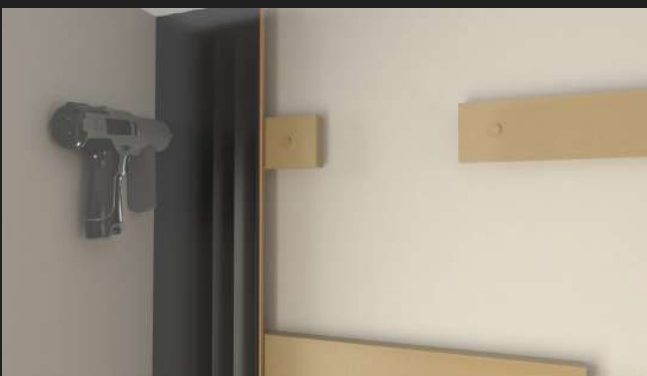
1. Place the battens discontinuously along the wall to allow ventilation, leaving a transverse gap of 40cm and a longitudinal gap of 1cm between each batten.

2. Start with the first plank always at the corner, maintaining the minimum distances from the floor, sides, and ceiling. Remember that ensuring squareness with the first plank is crucial. The groove side should always be oriented towards where you will continue placing panels. Secure this first plank to the batten by using nails, clips or staples on both the left and right side. It is recommended to remove the groove to facilitate the installation of the accessories.



3. Join the panels by connecting the tongue and groove and fasten the other side of the plank with nails or clips.

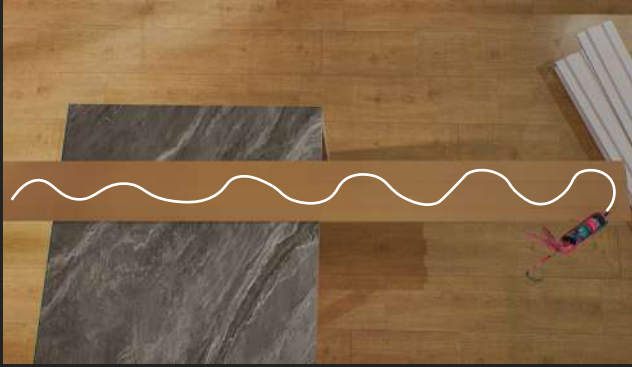
4. If the wall exceeds 10m in length, install an expansion molding.



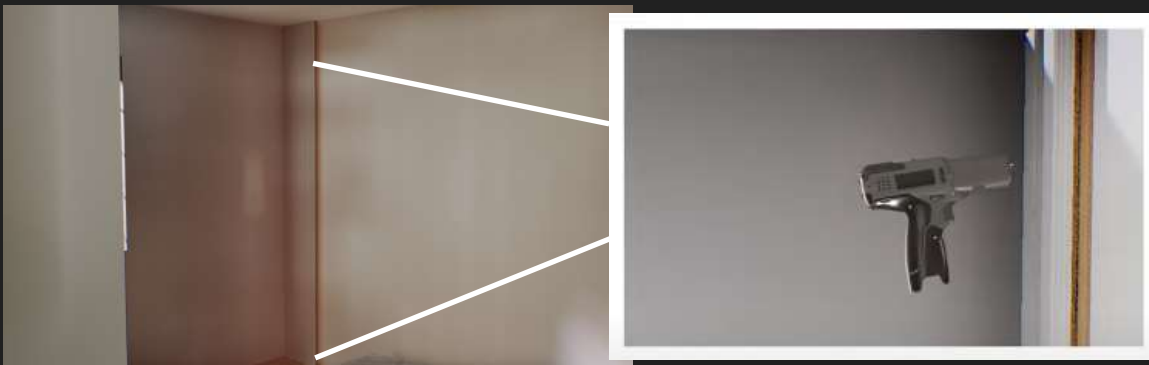
INSTALLATION INSTRUCTIONS GLUED WALL PANELS

FAUS
DECOR

1. Glue the backside of the panel to adhere it to the wall.
DO NOT USE silicones or adhesives with solvents.



2. Place nails in plasterboard wall or similar.



3. Instructions to place the panels.

